

**ILSE SCHREIBER-NOLL**

*Briefe an die Vergangenheit*  
*Letters to the Past*





Briefe an die Vergangenheit / Letters to the Past

Schreibersches Haus Museum Bad Arolsen

May 22 - October 30, 2016

A selection





Schreibersches Haus Museum Bad Arolsen  
Germany

My sincere thanks and gratitude goes to *Dr. Birgit Kümmel* and *Udo Reuter* for arranging this exhibition and to *Dr. Gerhard Moldenhauer* for his invaluable help and support.



## Briefe an die Vergangenheit / Letters To The Past

Briefe an die Vergangenheit sind Rückblicke auf meine Kindheit eingewoben in Dokumente der Gegenwart, Reflektionen meines Lebens von Heute und Gestern niedergelegt in Bildern, Texten, Künstler-Büchern und Installationen.

Das Gestern sind die Jahre in denen ich in Bad Arolsen (damals noch ohne Bad) aufwuchs, das Heute ist die Zeit nach meiner Auswanderung in die USA. Diese beiden Welten haben mich und meine Kunst geformt und spiegeln sich in meinen Arbeiten wieder gleichsam als Interpretationen der Gegenwart mit dem immer wiederkehrenden Motto der Vergangenheit. So verbinden sie das Zeitgeschehen mit Erlebnissen und Erfahrungen aus meiner Kindheit.

Das unbewusste Zusammenschweißen von Vergangenheit und Gegenwart entwickelte in mir ein ehrliches und tiefes Gefühl für die Konflikte und Probleme, die uns Menschen und unseren Planeten gleich einer dunklen Wolke überschatten wie Krieg, Vertreibung, Armut, soziale Benachteiligung, Umweltzerstörung. Solche Themen verdichteten sich im Laufe der Zeit zur Essenz meiner Werke.

Die „Briefe“ an die Vergangenheit sind nicht nur an die verstorbenen, unsichtbaren, ehemaligen Bewohner des Schreiberschen Hauses gerichtet sondern auch an jene Menschen, mit denen ich in dieser Stadt aufwuchs, also an jene, die ich liebte und hasste. Ihnen erzähle ich hier meine Geschichte.

-----

Letters to the Past are recollections of my childhood interwoven into documents of the present, reflections of my life of today and yesterday visualized in images, texts, Artists Books and installations.

Yesterday refers to the years in which I grew up in Germany and Today to the time after my emigration to the United States. These two worlds have shaped me and are reflected in my work, which depicts the Present with the recurring motif of the Past and with this melds today's events with my experiences as a child.

The unconscious fusion of past and present enabled me to respond with sincerity and true empathy to the conflicts and problems that like a dark cloud overshadow our planet such as war, poverty, social deprivation and environmental degradation. These themes over time became the essence of my work.

The Letters to the Past are not only addressed to the shadows of the former inhabitants of the Schreibersches Haus but also to the people I grew up with, to those that I loved and hated. This work will tell them my story.







Top: *Shadows*, Artists Book, mixed media and Xerox Transfer on paper, 14 x10 inches, 2011

Left top: Installation, *Weder Regen noch Sonne / Neither Rain nore Sun* Mixed media on Linen 54 x 53 inches, 2016

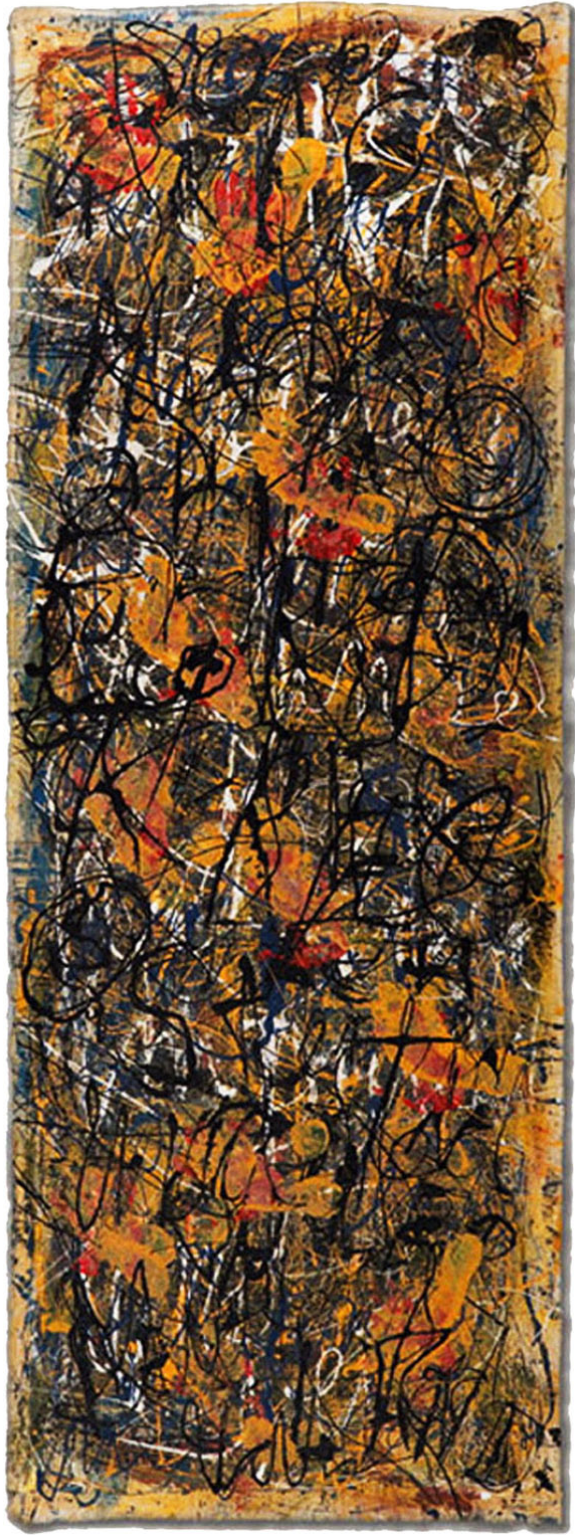
Left bottom: *Letters* burned and dipped in wax, one of 4 piles, 2016



***Footprints***

Top: installation view

Mixed media on Linen Drop Cloth, 32 x 86 inches, 2016









*Briefe*, portfolio of 15 drawings in box, mixed media, Xerox Transfer and sand on paper, each 9 3/4 x 13 inches, 2016





Left Top and Right Bottom: *The Walk I and II*, from a series of 6  
Mixed media and Xerox Transfer on paper, 16.5 x 24 inches, 2016

Left Bottom: *Letters*,  
mixed media and wax, 9 x 5 x 0.8 inches, 2016







Top: Installation View: *Shadows*, unique book, mixed media,  
Xerox Transfer and sand on paper, 14 x 10 inches, 2011  
*Letters* dipped in wax, 2016

Right Top: : *Thekla*, Artists Book  
Old book , mixed media, sand and wax  
14 x 7 inches, 2016

Right Bottom: *Die Felder und Dörfer Vergehen / The Erosion  
of Villages and Field*, mixed media, sand and collage on paper,  
11 x 35 inches (book open)











Left Top: *Child Migrant* Book I  
Unique Artist Accordion Book, 10 pages  
Mixed Media, sand, collage and cutouts on paper  
Open: 22 x 7 x 12 inches  
closed: 9 ½ x 7 ½ inches, 2016

Left Bottom: Cover page of *Child Migrants*

Right Top: *Schwarze Stille*, Gedichte von Paul Célan,  
mixed media and papermache bowls and two unique  
books, mixed media on roofing material, 2012 - 2015  
Installation view





Left Top: *Diaries of Conflicts* (installation view)

Three of a series of 20 small unique books depicting current and past conflicts, mixed media, sand and collage on paper, about 7 x 8 inches, 2007 - 2014

Right Top *Der Engel Schweigt / The Angel Remains Silent*

Unique Book with excerpts of a poem by Bertolt Brecht on gauze overlay. Mixed media and collage on paper, 12 x 26 inches (book open) 2011



*Ilse Schreiber-Noll* has been shown in many national and international exhibitions, among others:

rk - Galerie für zeitgenössische Kunst, Berlin, Germany, March 2017  
Akin Museum, Pawling, NY, 2016  
Hammond Museum, North Salem, NY, USA, 2016  
Schreibersches Haus, Museum Bad Arolsen, Germany, 2016  
Gallery Wetterney, Berlin, 2015  
Mills Galery, Pella, Iowa, 2015  
The AC Institute, Chelsea, NY, NY, 2013  
The Samuel Dorsky Museum of Art, New Paltz, NY, 2012  
The Corcoran Gallery of Art, Washington DC 2011  
Galerie Stadtspeicher, Jena, Germany 2011  
Goethe Institute, Washington DC, 2011  
The Whitney Bienial 2006 Whitney Museum of American Art, NY., 2006  
Brecht Haus/Literaturforum, Berlin, Germany, 2006  
Gallery Brecht-Weigel-Haus, Buckow, Germany, 2005  
The Grolier Club, New York, NY 2005

The artist presently lives and works in Croton on Hudson, NY, USA  
and in Berlin, Germany.

All the books in this selection are conceived, printed and bound by the artist

Ilse Schreiber-Noll  
ilsenoll@me.com  
www.ilseschreibernoll.com



ARTISTS FOR THE PEOPLE PRESS  
Founded 2002  
Croton on Hudson, New York